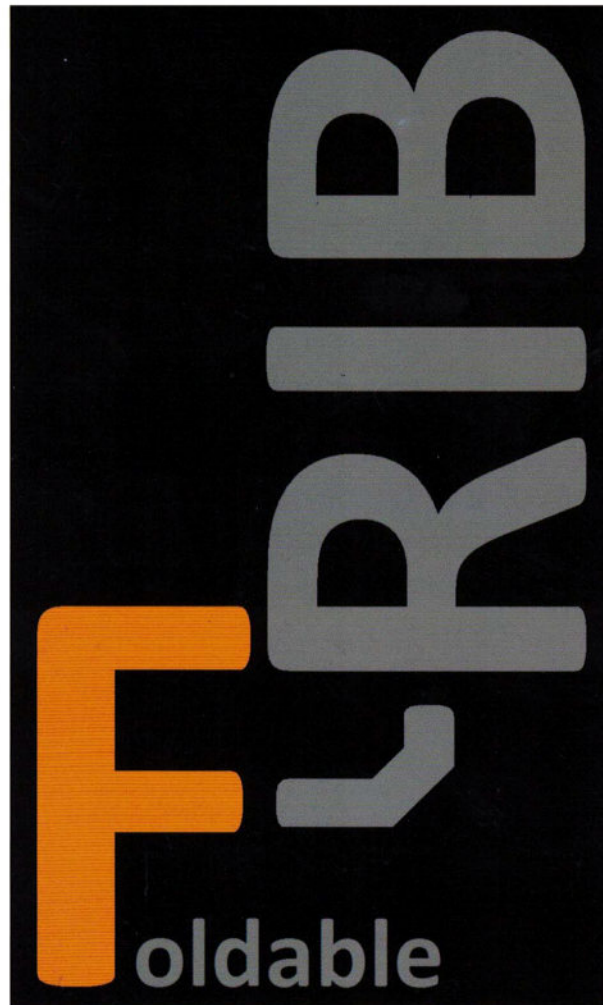


# OWNERS MANUAL



PATENTED FOLDABLE RIB TECHNOLOGY

F-RIB is a registered trademark of Aquamarine Group. The F-RIB rigid inflatable boat design is patented design. The F-RIB has registered patents in Europe and has other international patents pending. ©Copyright 2008-2013. All rights reserved. Photographs may show optional equipment.

## TABLE OF CONTENTS

BEFORE INITIAL USE OF THE BOAT .....	1
SEAWORTHINESS & CREW ABILITY.....	1
WEATHER AND WATER CONDITIONS.....	1
TECHNICAL SPECIFICATIONS.....	2
BOAT PACKAGE CONTENTS .....	3
ASSEMBLING THE BOAT .....	3
DISASSAMBLING .....	6
BREAK-IN PERIOD .....	7
MAINTAINING YOUR BOAT .....	7
WARRANTY .....	7

# **WARNING**

## **WARNING – Hazards or unsafe practices COULD result in severe personal injury or death.**

### **BEFORE INITIAL USE OF THE BOAT**

Before using a F-RIB Rigid Inflatable Boat it is important the operator familiarizes themselves with it's operation and safe use. It is strongly recommended that:

- the operator fully reads this manual, and understands the craft's operation, maintenance and safe use
- a complete detailed visual check of the craft is made before initial use, and before each subsequent journey
- all safety and emergency equipment is checked and confirmed to be correctly located on board (including appropriate lifejackets for all users, and ensuring the craft has a full emergency kit onboard), and all operators and passengers of the craft know how to operate this safety equipment

### **SEAWORTHINESS & CREW ABILITY**

Regardless of the craft's seaworthiness, protection from anomalous sea and wind conditions cannot be guaranteed. The ability, experience and fitness of the crew should therefore be taken into consideration before making any voyage. As a minimum, ensure that the anticipated wind and sea conditions will correspond to the design category of the boat and that the crew is able to handle the boat in these conditions.

The owner and users of the craft are responsible for determining its suitability for any and all selected uses and assumes all risks in connection therewith when used, including the safety of persons and property, and only operating the craft under safe conditions. In some countries a driving license or authorization is required, or specific usage regulations are in force. Check before making voyages.



**Any boat, no matter how strong it may be, can be severely damaged by misuse.**



**Always maintain the craft properly.**

### **WEATHER AND WATER CONDITIONS**

Always check the local maritime weather and water conditions before commencing any journey.

The ability, experience and fitness of the crew must be taken into consideration before making any voyage.

As a minimum, ensure that the anticipated wind and sea conditions are within the capability of the boat and that the crew is able to handle the boat in these conditions.

## TECHICAL SPECIFICATIONS

Model	F-RIB 275	F-RIB 330	F-RIB 360	F-RIB 375	F-RIB 460
Length (ft./mm)	9.2/2750	11/3300	11.8/3600	12.3/3750	15.1/4600
Beam (in./mm)	63/1600	65/1650	65/1650	69/1750	65/1650
Hull shape	V	V	V	V	V
Hull and transom material	fiberglass (GRP)	fiberglass (GRP)	fiberglass (GRP)	fiberglass (GRP)	fiberglass (GRP)
Keel at transom (degrees)	12	12	12	12	N/A
Middle height (in./mm)	18/460	18/460	20/510	20/510	22.8/580
Cockpit length (in./mm)	75/1900	87/2200	100.4/2550	108/2750	155.5/3950
Cockpit width (in./mm)	800	31/800	30/760	34/860	36/910
Dry weight (lbs./kg)	36	95/43	106/48	124/56	159/72
Tube diameter (in./mm)	15.7/400	16.5/420	16.9/430	16.9/430	13.7/350
Tube PVC density (lbs. per ft. sq/g per m. sq)	0.2254/1100	0.2254/1100	0.2254/1100	0.2254/1100	0.2254/1100
Number of chambers	4	3	3	3	3
Transom height (in./mm)	15/385	15/385	15/385	15/385	15/385
Max outboard power (hp)	15	15	25	25	20
Recommended outboard power (hp)	5-10	5-10	10-15	15	2-15
Passenger capacity (adults)	3	4	4	5	5
Payload (lbs./kg)	660/300	990/450	1543/700	1555/750	1764/800
Packed dimensions (in./mm)	34X36x18/ 850x900x400	36x36x18/ 900x900x400	43x36x18/ 1100x900x450	43x43x18/ 1100x1100x450	59x43x24/ 1500x1100x600

Model	F-RIB 275	F-RIB 330	F-RIB 360	F-RIB 375	F-RIB 460
Boat	1ps	1ps	1ps	1ps	1ps
Oars	2ps	2ps	2ps	2ps	2ps
Seat benches	1ps	2ps	2ps	2ps	2ps
Air pump	1ps	1ps	1ps	1ps	1ps
Bag	1ps	1ps	1ps	1ps	1ps
Repair kit	1ps	1ps	1ps	1ps	1ps
Owner's manual	1ps	1ps	1ps	1ps	1ps
Mounting bolt assembly	-	1ps	2ps	2ps	2ps



Never over exceed maximum passengers and payload capacity specified by manufacturer.


## BOAT PACKAGE CONTENTS

Model	F-RIB 275	F-RIB 330	F-RIB 360	F-RIB 375	F-RIB 460
Boat	1ps	1ps	1ps	1ps	1ps
Oars	2ps	2ps	2ps	2ps	2ps
Seat benches	1ps	2ps	2ps	2ps	2ps
Air pump	1ps	1ps	1ps	1ps	1ps
Bag	1ps	1ps	1ps	1ps	1ps
Repair kit	1ps	1ps	1ps	1ps	1ps
Owner's manual	1ps	1ps	1ps	1ps	1ps
Mounting bolt assembly	-	1ps	2ps	2ps	2ps

## ASSEMBLING THE BOAT

1. Put the package containing the boat onto flat hard surface. The surface dimensions should be enough to accommodate assembled boat.



 Please make sure that there are no sharp stones, broken glass and other objects that can damage the boat during the assembly on the surface for assembly.

2. Open the package containing the boat, release the boat from ratchet straps and put it on aft section.



Without too much effort pull the middle section, turn it 180° and lay down on the surface for assembly.



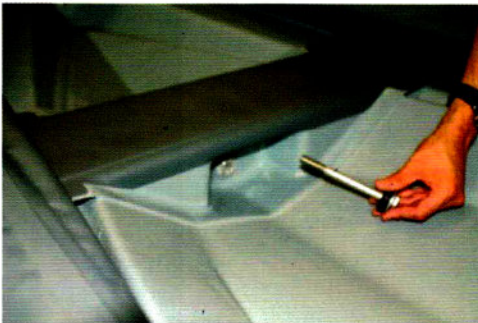
In the same way unfold bow section from already laid out middle section and put it on the surface for assembly.



3. Fix the boat structural elements against each other using bolts with dampers supplied together with the boat.



In order to get that done put a washer and low rubber damper onto the bolt and insert it into the hole between the boat sections.



On the reverse side put high damper and washer onto the bolt and screw butterfly nut 2-3 rotations after effort occurs.



Do not use wrenches, pliers or other tools to tighten the butterfly nut.



In F-RIB 275 model boats fastening the boat shell sections against each other with bolts with dampers is not required by design.



For other models see the specification for the number of fastening bolts.

4. After the boat shell sections are laid out and fixed against each other, start pumping of the balloon. In order to get that done bring air valves into operating position slightly pushing them and turning clockwise.



Before you start pumping make sure that the air valves are clean.

5. Start pumping the boat from aft sections of the balloon

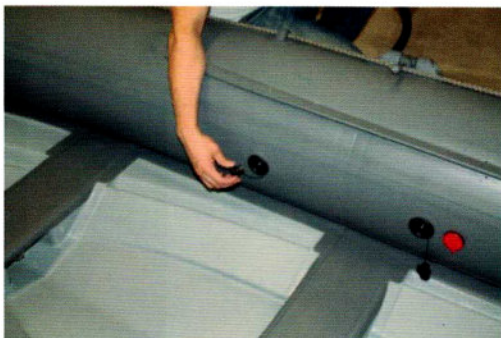


Pressure in the aft sections should be approximately 0.2 bar.

After you pumped the aft sections, pump bow sections. Pressure in the bow sections should be 0.2-0.25 bar.



After you pumped all the balloon sections close the air valves with covers.



6. Install seats supplied with the boat.






For that end guides located on the balloon should get into gutters on the seat.



7. Assemble oars supplied with the boat, get the oars into the rowlocks and fasten them with plastic cap nuts.



8. Before floating the boat out make sure that spill valve in the aft section is plugged.

 Before submerging boat into the water, always make sure that all mounting hardware is installed correctly.

Now, the boat is ready.

 **ATTENTION**

Over inflating the chambers will reduce air tube life.

Remember, long exposure to direct sunlight or extreme heat will increase air pressure and low temperatures will reduce air pressure. In both cases, it is highly recommended to check and adjust pressure to its normal level.

Always keep air valves and protective caps clean from any foreign objects. To avoid dirt from getting into the air tube, always keep the caps on.


 **CAUTION**

Use only proper air pumps and air compressors. Use of automotive air pumps and high pressure compressors is prohibited. Rowlock caps should always be on. Failure to do so will result in damage to the air tube.

Always make sure that outboard motor is installed correctly and secured.

## DISASSAMBLY

Disassembly procedure should be conducted in reverse order. To deflate the tube, simply depress and twist plunger until it snaps into its deflating position. After removing oars, reinstall rowlock protective caps.

 Before folding the boat in is necessary to tack deflated air tube inside the hull. Failure to do so will result in air tube damage.


For that end guides located on the balloon should get into gutters on the seat.



7. Assemble oars supplied with the boat, get the oars into the rowlocks and fasten them with plastic cap nuts.



8. Before floating the boat out make sure that spill valve in the aft section is plugged.

 Before submerging boat into the water, always make sure that all mounting hardware is installed correctly.

Now, the boat is ready.

 **ATTENTION**

Over inflating the chambers will reduce air tube life.

Remember, long exposure to direct sunlight or extreme heat will increase air pressure and low temperatures will reduce air pressure. In both cases, it is highly recommended to check and adjust pressure to its normal level.

Always keep air valves and protective caps clean from any foreign objects. To avoid dirt from getting into the air tube, always keep the caps on.


 **CAUTION**

Use only proper air pumps and air compressors. Use of automotive air pumps and high pressure compressors is prohibited. Rowlock caps should always be on. Failure to do so will result in damage to the air tube.

Always make sure that outboard motor is installed correctly and secured.

## DISASSAMBLY

Disassembly procedure should be conducted in reverse order. To deflate the tube, simply depress and twist plunger until it snaps into its deflating position. After removing oars, reinstall rowlock protective caps.

 Before folding the boat in is necessary to tack deflated air tube inside the hull. Failure to do so will result in air tube damage.

# **WARNING**

## **WARNING – Overpowering a boat can result in serious injury, death or boat damage.**

Using an outboard that exceeds the maximum horsepower limit of a boat can cause loss of boat control, place too much weight at the transom altering the designed flotation characteristics of the boat or cause the boat to break apart particularly around the transom area.

### **BREAK-IN PERIOD**

After each assembly, boat will require a break in period, during which, when submerged in the water, might develop slight seepage around folding flange areas. Some wet spots may be seen in the bilge of the hull. After a few minutes of boating all flanges will align into each other and form a sealed connection. In rare instances, if seepage persists, tightening of thumb joint nut by  $\frac{1}{2}$  of a turn may be necessary.



Always make sure all flanges and mounting bolt washers and rubber bushings are free from any debris, sand and foreign objects.

### **MAINTAINING YOUR BOAT**

After each use, wash down the craft with fresh water, taking care to remove any salt from the craft, and run fresh water through the outboard engine after every use (if applicable).



Do not clean the boat with solvents or any other chemicals. Solvents or petrol can damage inflatable tube material. Any accidental spills must be removed immediately with soapy water.



Do not leave the craft under direct sunlight for extended periods of time when not in use.

Best when stored under normal temperatures and sufficient ventilation. All ventilation (if applicable) and drain plugs should be removed. Boat should be free from any debris, sand and any foreign objects.



Do not store in enclosed place with high humidity and excessive temperatures.

### **WARRANTY**

We at F-RIB trust the purchase of your boat will bring many years of enjoyable and dependable service.

#### **INTRODUCTION**

Subject to the terms and conditions detailed below, F-RIB warrants the F-RIB Rigid Inflatable Boat (RIB) to be free from defects in material or workmanship for the defined warranty period, and will, at it's option, repair or replace defective

parts on return of the craft to the premises of an Authorized F-RIB Service Centre.

This warranty applies to new F-RIB RIB purchased from an Authorized F-RIB Reseller.

By using the F-RIB RIB, the owner and operator understands and agrees to undertake all instructions in the F-RIB RIB Owner's Manual, and agrees to all warranty and liability terms and conditions contained in this warranty.

## **WARRANTY PERIOD**

F-RIB warrants F-RIB branded components from the date of purchase for a period of:

- 36 consecutive months for normal personal recreational use
- 90 consecutive days for commercial, or any other use

The product is deemed to be used for commercial purposes when used in connection with any work or employment that generates or contributes towards income during any part of the warranty period.

Normal recreational use is defined as not more than 100 annual return trips with not more than 100 annual outboard hours. Greater annual usage than this is not covered by the F-RIB recreational warranty.

## **ITEMS INCLUDED UNDER THIS WARRANTY**

F-RIB RIB covered under the warranty includes the following:

- F-RIB hull and associated hull components
- Inflatable tubes
- Mast, boom, rudder, tiller and sail

Other non-F-RIB branded peripheral components are covered under their separate manufacturer's warranty. These include (but are not limited to):

- Outboard engine and associated branded peripherals
- Electronic peripherals, including VHF, navigational and entertainment units

This warranty is limited to repair, or at F-RIB option, replacement of parts suffering from any of the defects described above during the warranty period. The judgment of F-RIB is final concerning the extent of items covered under warranty.

## **WARRANTY EXCLUSIONS**

The following are not warranted under any circumstances:

- Replacement of parts due to normal wear and tear
- Routine maintenance parts and services and other consumable items
- Damage caused by not following procedures and recommendations in the F-RIB Owner's Manual
- Damage caused by improper or lack of maintenance, winterization or storage
- Damage caused by abuse, impact, accident, misuse, abnormal use or strain, neglect, racing, improper operation or operation not in accordance with the recommended procedures described in the F-RIB Owner's Manual;
- Damage or cosmetic changes due to exposure to the atmospheric or environmental conditions, including mold or marine organisms, or outside galvanic activity.
- Damage resulting from tears, punctures, abrasions, abuse, external damage, accident, submersion, water ingestion or contamination, fire, theft, vandalism or any act of God;

Additionally:

The owner of the craft is expected to ensure the craft is properly operated and maintained as detailed in the F-RIB Owner's Manual, and to take all reasonable precautions to avoid or minimize loss, damage or liability. F-RIB may require proof of maintenance before authorizing warranty support.

- The owner and user of the boat is responsible for determining its suitability for any and all selected uses and assumes all risks in connection therewith when used, including the safety of persons and property, and only operating the craft under normal safe conditions.
- The owner acknowledges that the boat is to be stored completely under cover when not in operational use.

F-RIB may deem warranty to be void due to improper repairs or maintenance, or removal or modification parts, or use of parts or accessories not supplied by F-RIB, which in F-RIB reasonable opinion affects the serviceability or reliability of the craft or caused a specific failure.

F-RIB does not assume responsibility for losses or damage from shipping in connection with repairs or warranty work. F-RIB reserves the right to enhance, modify or change product or specifications from time to time, without any obligation to alter previously manufactured craft.

### **OBTAINING WARRANTY COVERAGE**

The owner must notify F-RIB or an Authorized F-RIB Service Centre within 7 days of the appearance of a defect. In order to have any defect corrected, the owner of the boat must first contact via email, mail to either: F-RIB or an Authorized F-RIB Service Centre.

Either F-RIB or an Authorized F-RIB Service Centre will then advise the owner what to do. When requested, the owner must return the F-RIB RIB, including any defective part therein, to the nearest Authorized F-RIB Service Centre promptly, and within the warranty period. The expenses of transporting the craft to and from F-RIB or an Authorized F-RIB Service Centre for warranty service are to be borne by the owner. The owner must provide F-RIB or an Authorized F-RIB Service Centre with reasonable opportunity to repair the defect.

Once the warranty claim has been accepted by F-RIB, the repair or replacement of parts will be done without charge for parts and labor, at the recommended F-RIB or an Authorized F-RIB Service Centre's premises.

F-RIB responsibility is limited to making the required repairs or replacements of parts with new or F-RIB remanufactured or reconditioned parts. All parts replaced under this warranty become the property of F-RIB.

In the event that warranty service is required outside of the region from where the craft was purchased, the owner is responsible for any additional charges in obtaining the warranty service due to but not limited to, freight, insurance, taxes, fees, import duties, and any and all other financial charges required to interact with the nearest an Authorized F-RIB Service Centre.

### **TRANSFER**

On the transfer of ownership of a craft, any remaining warranty period may also be transferred to the new owner provided that the former or new owner promptly contacts F-RIB, and the craft has only previously been used for recreational use, and will only be used for recreational use during the remainder of the warranty period.

It is the responsibility of the new owner to ensure the previous owner has fully maintained and operated the craft in accordance with this warranty document.

### **LIMITATIONS OF LIABILITY**

F-RIB obligations and liability are limited to, at its sole discretion, repairing or replacing parts of the Rigid Inflatable Boat found to be defective in material or workmanship, in the judgment of F-RIB. In all cases F-RIB judgment will be final.

The warranty described in this document shall be in lieu of any other warranty, express or implied including, but not limited to, any implied warranty of merchantability or fitness for a particular purpose. The parties agree that the owner's sole exclusive remedy against F-RIB shall be repair or replacement as provided herein, and the owner agrees that no other remedy shall be available, including any claims for incidental, consequential, direct, indirect or other damages of any kind, including but not limited to, expense for transporting product to and from Service Centre, freight, travel expenses (including alternate loan product), boat retrieval (including water charges, slip or dock fees, trailer or towing, storage), telecommunication charges, rental or hire charges of any kind, lost profits or sales, or any other incidental or consequential losses that may be incurred.

F-RIB is not responsible or liable for personal injury in connection with the use of this product.

SOME REGIONS OR JURISDICTIONS DO NOT ALLOW FOR THE DISCLAIMERS, LIMITATIONS OF INCIDENTAL OR CONSEQUENTIAL DAMAGES, OR OTHER EXCLUSIONS IDENTIFIED IN THIS DOCUMENT. AS A RESULT THEY MAY NOT APPLY TO YOU. THIS EXPRESS WARRANTY GIVES YOU SPECIFIC RIGHTS, AND YOU MAY ALSO HAVE OTHER LEGAL RIGHTS WHICH MAY VARY FROM REGION TO REGION.

No other person or entity is authorized to make representation or warranty regarding F-RIB products other than detailed in this document, and if made, shall not be enforceable against F-RIB.